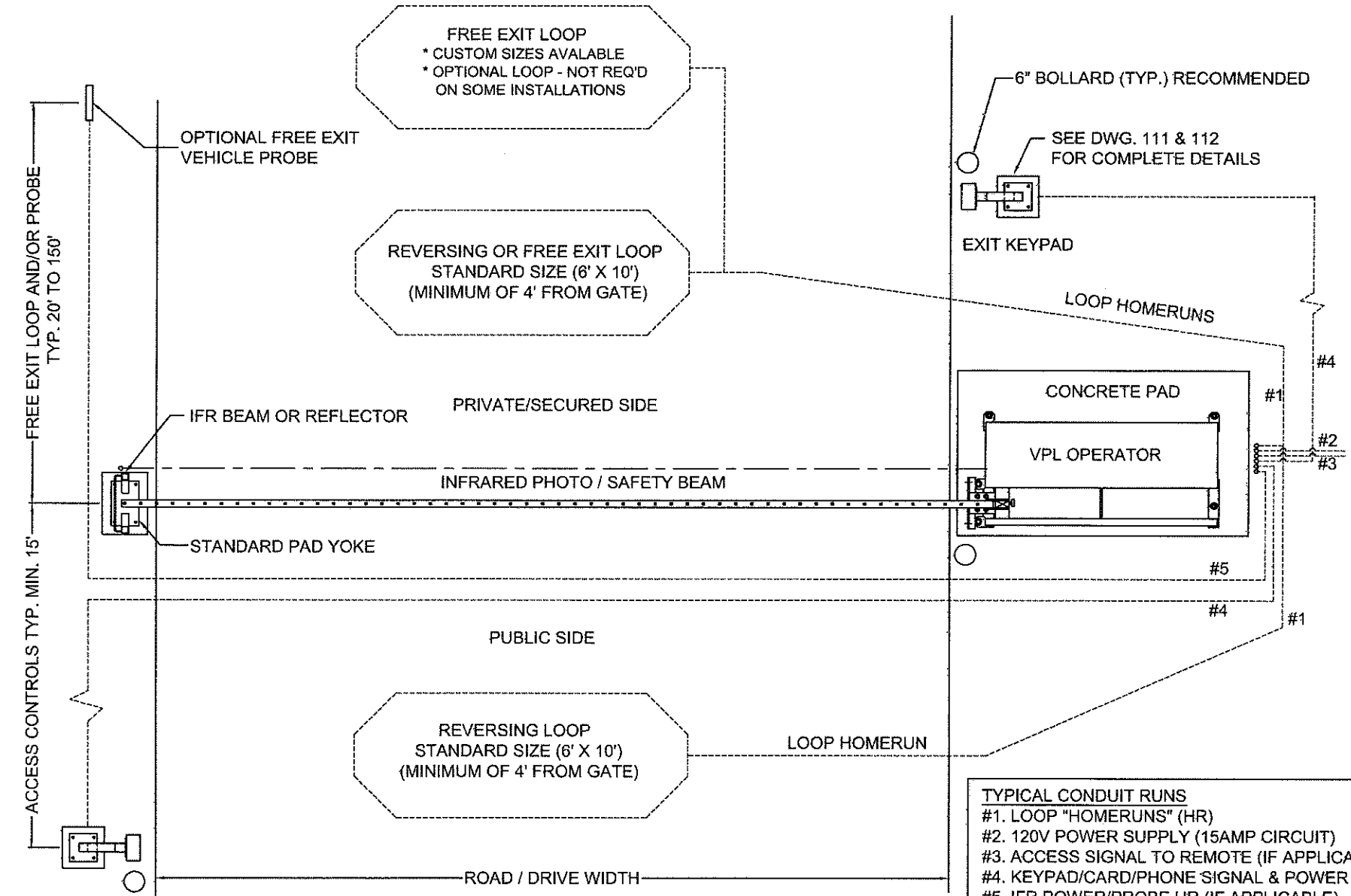


LEFTHAND OPERATOR



ENTRANCE KEYPAD NORMALLY, GATE LENGTH MUST EXCEED THIS WIDTH BY AT LEAST 12"
 (FOR CURB APPLICATIONS - SEE: DWG. # 120-C & 151-R)

- TYPICAL CONDUIT RUNS**
- #1. LOOP "HOMERUNS" (HR)
 - #2. 120V POWER SUPPLY (15AMP CIRCUIT)
 - #3. ACCESS SIGNAL TO REMOTE (IF APPLICABLE)
 - #4. KEYPAD/CARD/PHONE SIGNAL & POWER
 - #5. IFR POWER/PROBE HR (IF APPLICABLE)

NOTICE
 THE INFORMATION CONTAINED
 ON THIS DOCUMENT IS
 CONFIDENTIAL. ANY
 DISSEMINATION, UNAPPROVED
 DISCLOSURE OR COPYING OF
 THIS INFORMATION IS
 STRICTLY PROHIBITED
 UNLESS OTHERWISE SPECIFIED
 DIMENSIONS ARE IN INCHES
 ANGLES ± 1°
 XX ± 1/32, XX ± .01, XXX ± .005

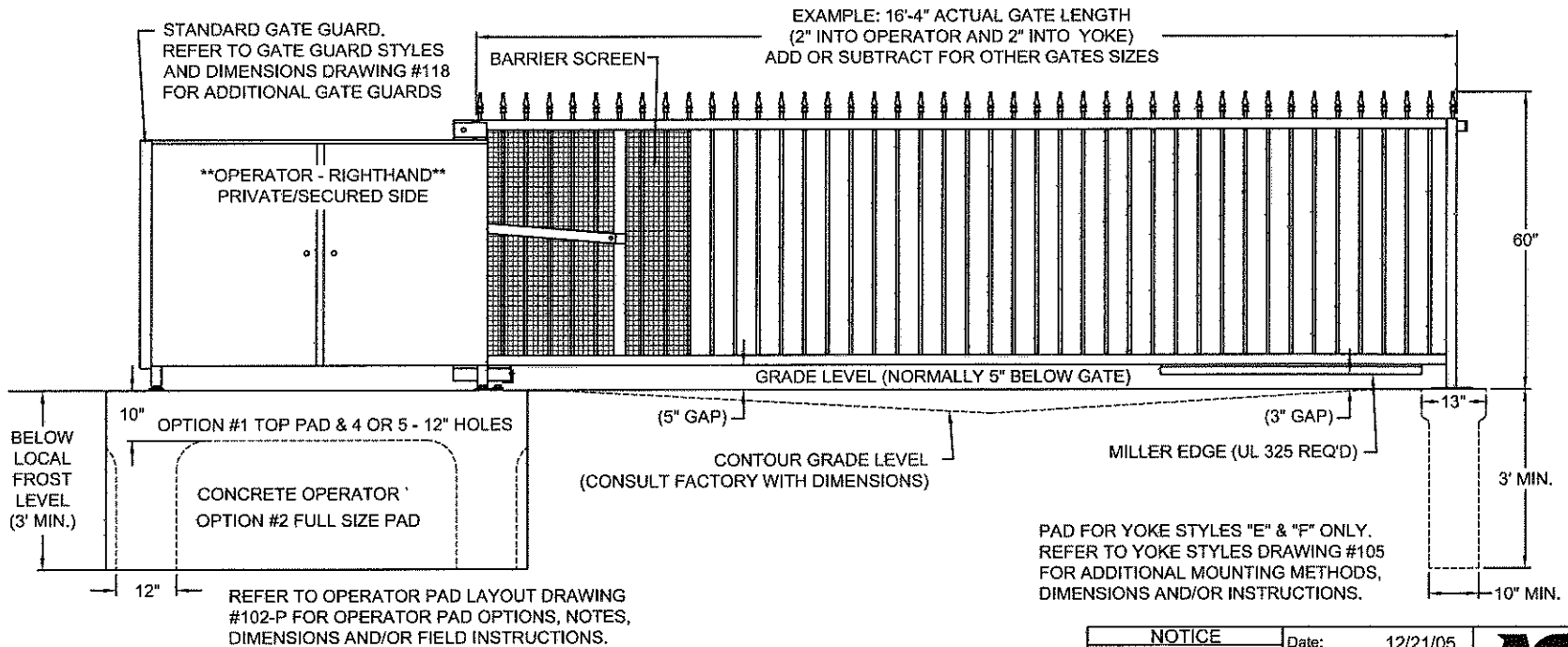
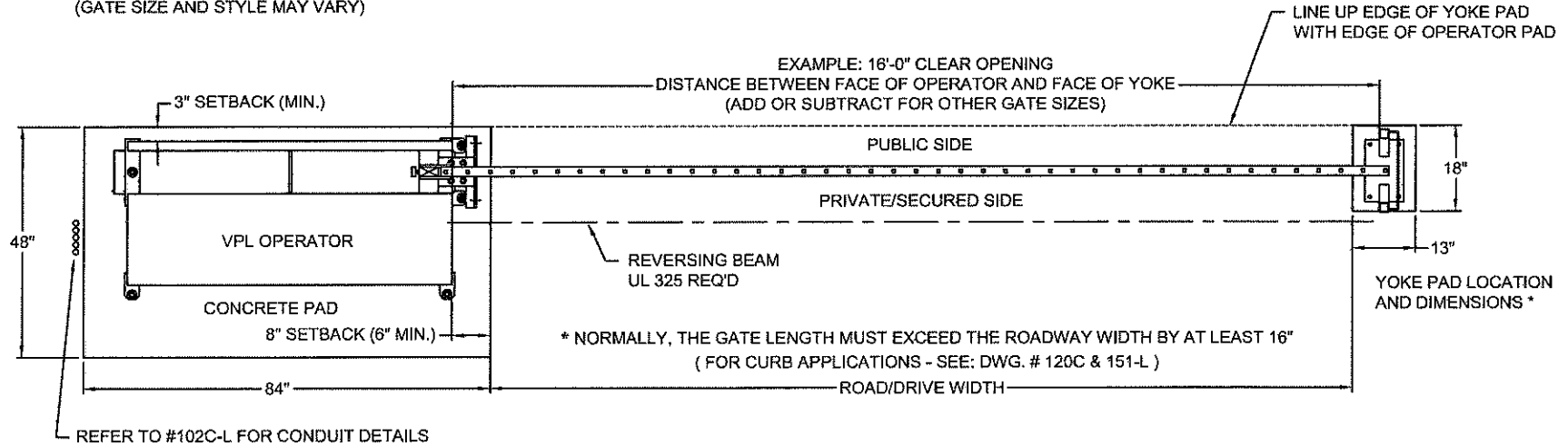
Date: 12/20/05
 Dr. By: MKS
 Ckd. By: DMR
 Dwg.: 100-L
 Title: Operator & Accessory Site Layout (L/H)




DO NOT SCALE					
Rev.:	Description:	Date:	Drn. By:	Ckd. By:	
A	UPDATED DRAWING	01/22/13	SLD	KLL	

LEFTHAND OPERATOR

EXAMPLE SHOWN: 16' X 5' BUCKEYE STYLE 500 GATE
(GATE SIZE AND STYLE MAY VARY)

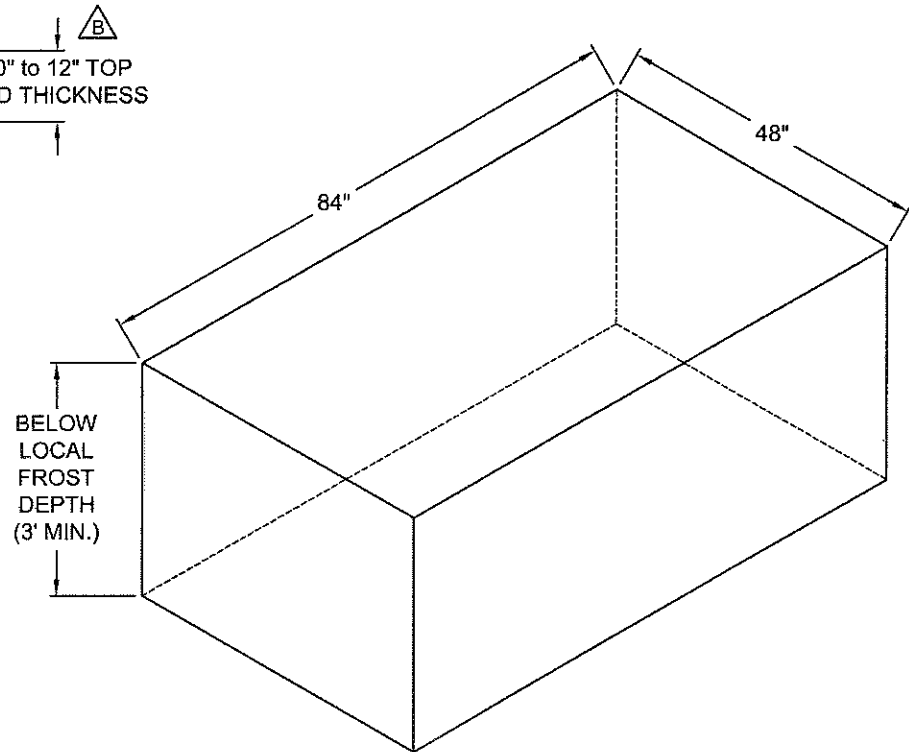
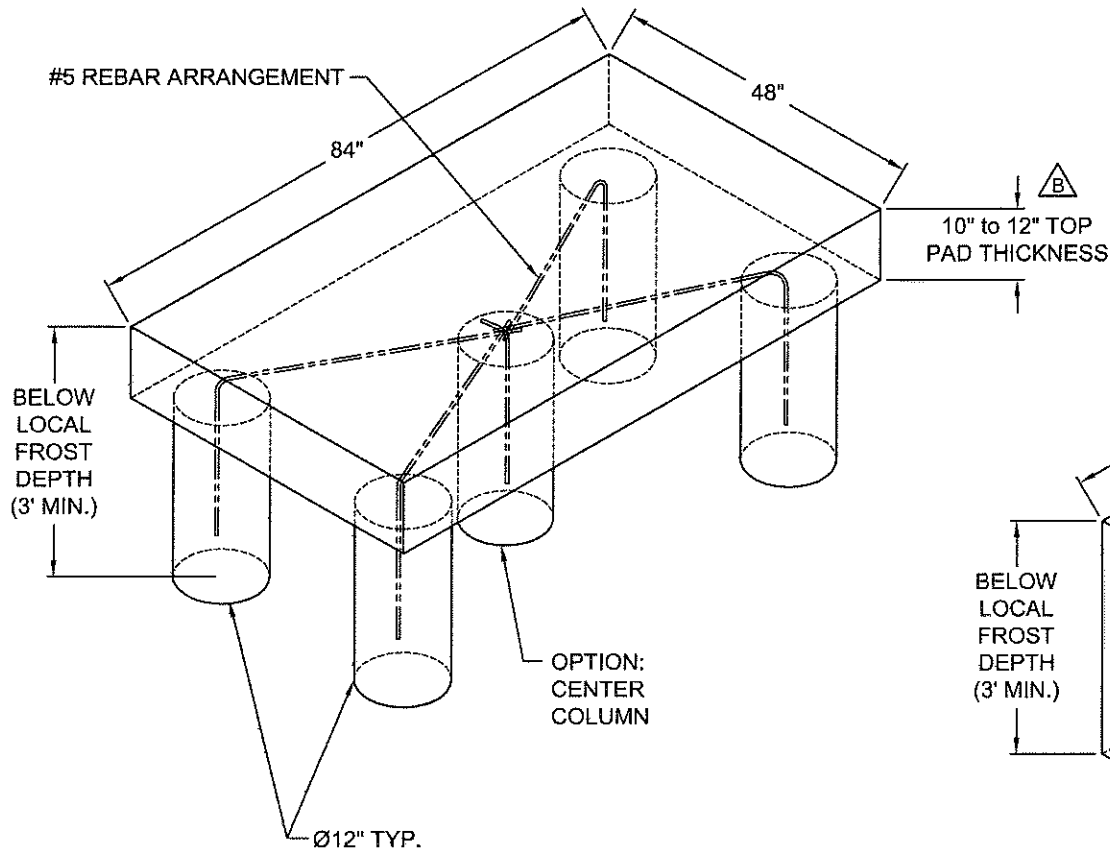


NOTICE		Date: 12/21/05	 AutoGate Gate Entry Systems Berlin Heights, Ohio FAX (419) 588-3514
THE INFORMATION CONTAINED ON THIS DOCUMENT IS CONFIDENTIAL. ANY DISSEMINATION, UNAPPROVED DISCLOSURE OR COPYING OF THIS INFORMATION IS STRICTLY PROHIBITED.		Drn. By: MKS	
UNLESS OTHERWISE SPECIFIED DIMENSIONS ARE IN INCHES ANGLES ± 1°		Ckd. By: DMR	
X/X ± 1/32, XX ± .01, XXX ± .005		Dwg.: 101-L	Title: Standard Layout Dimensions - Lefthand

Rev.:	Description:	Date:	Drn. By:	Ckd. By:
A	UPDATED DRAWING	01/22/13	SLD	KLL

OPTION #1:

(4) or (5) MIN. 12" AUGURED HOLES, RE-BAR, AND A 10" TO 12" TOP PAD



NOTES:

- 1) ALL PAD DEPTHS SHOULD BE BELOW LOCAL FROST DEPTH
- 2) TOP OF PAD MUST BE FLAT AND LEVEL
- 3) USE REBAR THAT CONFORMS WITH LOCAL CODES OR JOB SPECS.

OPTION #2:

FULL CONCRETE PAD WITH RE-BAR WHERE APPLICABLE PER GOVERNING CODE OR STANDARD.

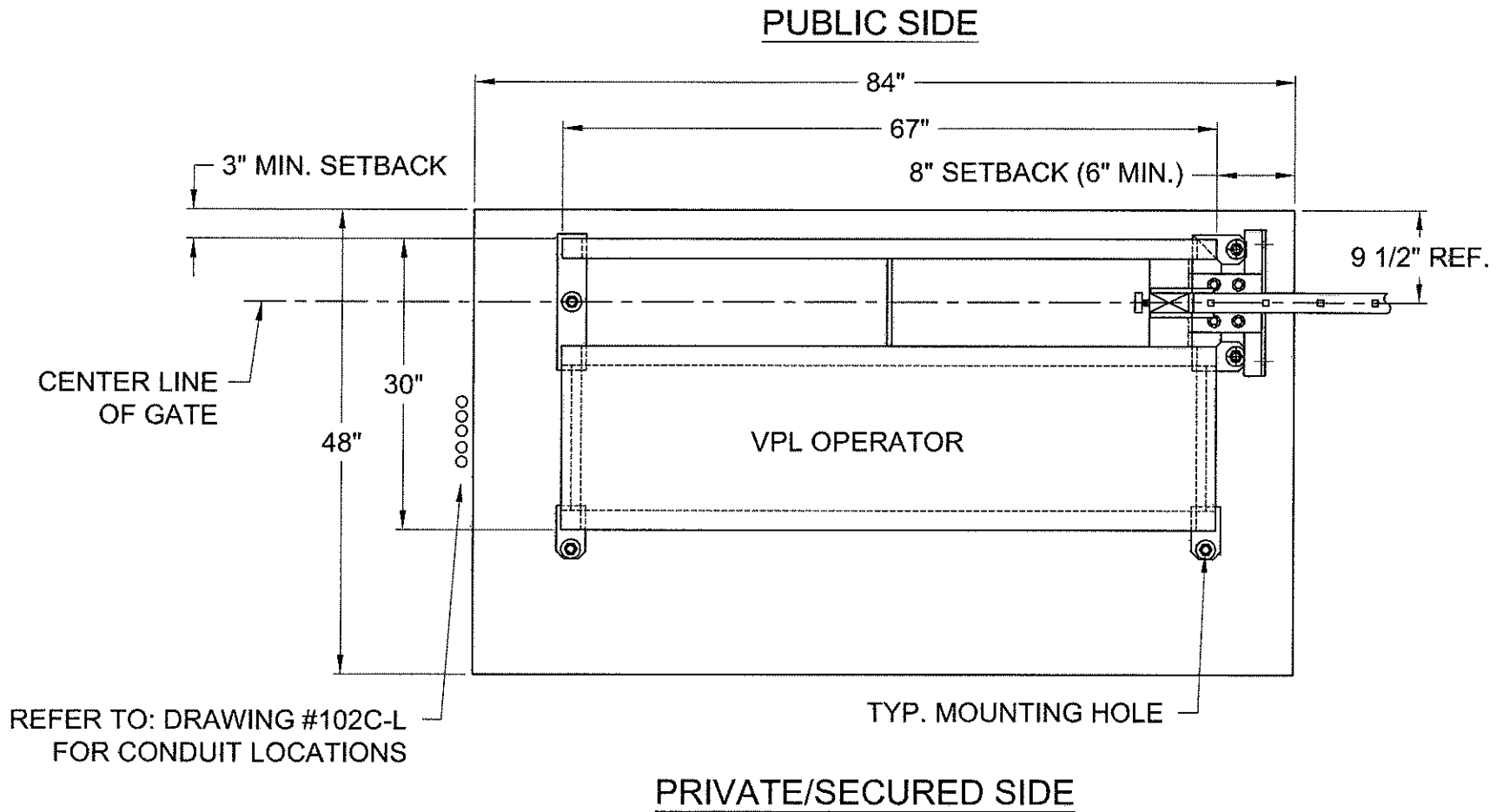
DO NOT SCALE					
Rev.:	Description:	Date:	Drn. By:	Ckd. By:	
B	10" TO 12" PAD THICKNESS WAS 8" TO 10"	01/24/13	SLD	KLL	
A	CONDUIT LOCATIONS WERE MOVED OUTSIDE THE PAD	07/18/08	MKS	DMR	

NOTICE
 THE INFORMATION CONTAINED ON THIS DOCUMENT IS CONFIDENTIAL. ANY DISSEMINATION, UNAPPROVED DISCLOSURE OR COPYING OF THIS INFORMATION IS STRICTLY PROHIBITED.
 UNLESS OTHERWISE SPECIFIED DIMENSIONS ARE IN INCHES
 ANGLES ± 1°
 .XX ± 1/32, .XX ± .01, .XXX ± .005

Date: 12/21/05
 Drn. By: MKS
 Ckd. By: DMR
 Dwg.: 102-P
 Title: Operator PAD Layout / Options



LEFTHAND OPERATOR



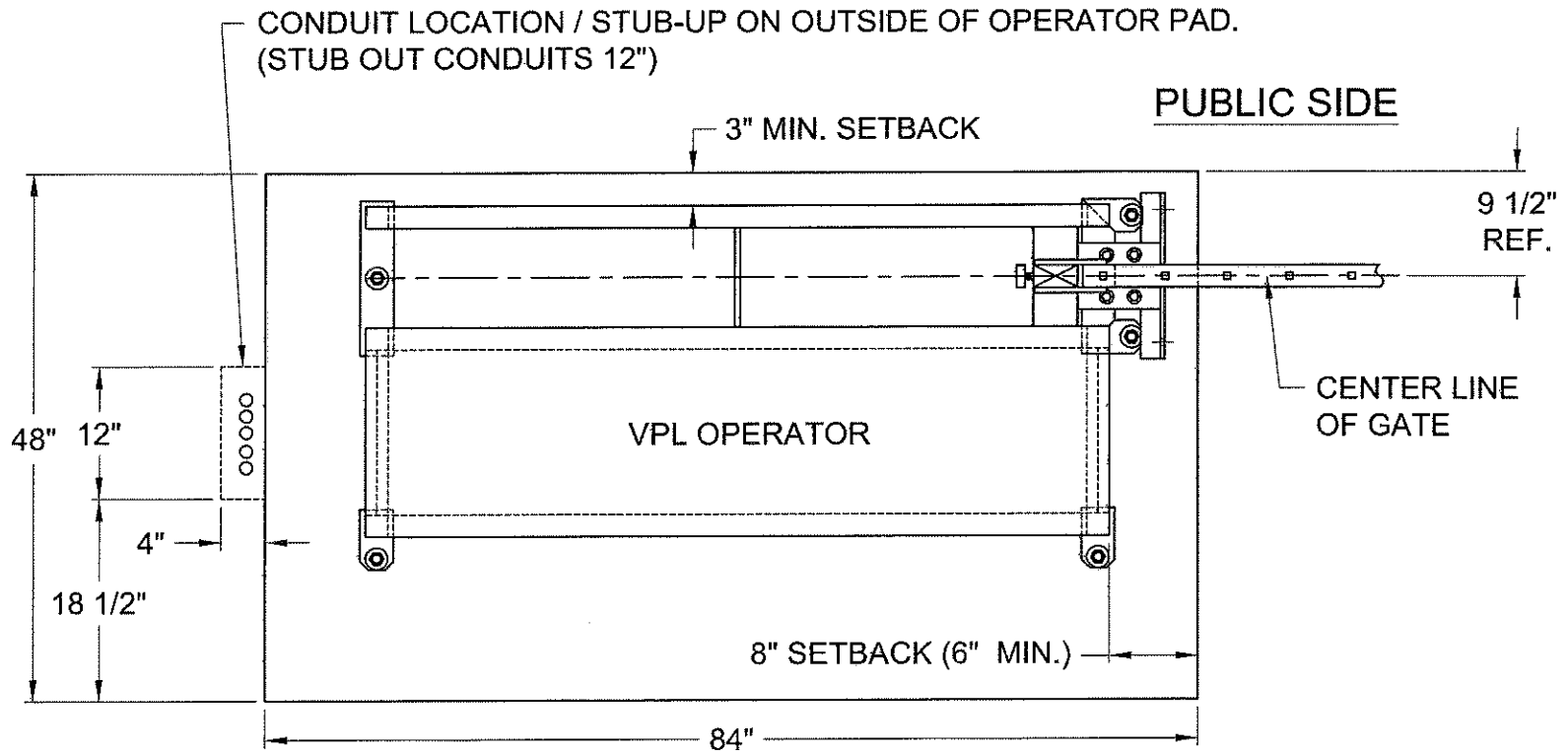
NOTES:

- 1) PAD DIMENSIONS CAN VARY PER SITE
- 2) LEAVE AT LEAST 3" BETWEEN ANCHOR AND EDGE OF PAD
- 3) ALL PADS MUST BE Poured LEVEL AND BELOW LOCAL FROST LINE DEPTH

Rev.:	Description:	Date:	Dwn. By:	Ckd. By:	NOTICE	Date:
C	Updated drawing	1/23/13	SLD		THE INFORMATION CONTAINED ON THIS DOCUMENT IS CONFIDENTIAL. ANY DISSEMINATION, UNAPPROVED DISCLOSURE OR COPYING OF THIS INFORMATION IS STRICTLY PROHIBITED. UNLESS OTHERWISE SPECIFIED DIMENSIONS ARE IN INCHES ANGLES ± 1° .XX ± .1/32, .XX ± .01, .XXX ± .005	12/07/05
B	Removed "Stub conduits under operator when possible" note	02/04/10	MKS			Dwn. By: MKS
A	Conduit locations were moved outside the pad	07/18/08	MKS			Ckd. By: DMR
DO NOT SCALE						Dwg.: 102-L
						Title: Standard Pad Layout (Lefthand)



LEFTHAND OPERATOR



* NOTE: USE 3/4" CONDUIT ONLY

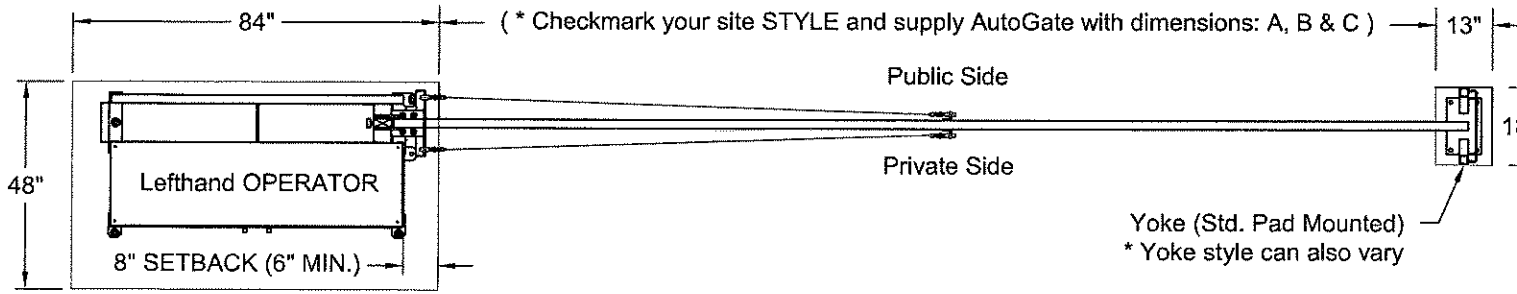
PRIVATE/SECURED SIDE

POSSIBLE CONDUITS

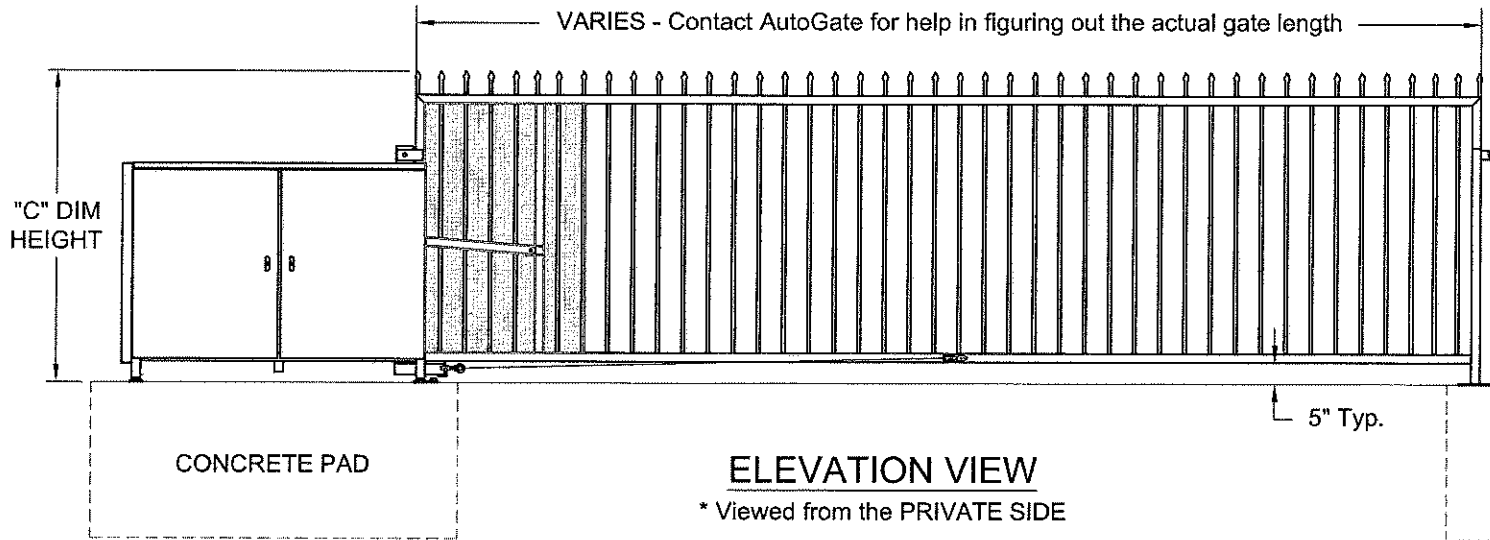
- * 120 VAC, MIN. 15 AMP CIRCUIT
- * FREE EXIT LOOP
- * "ENTRANCE" KEYPAD
- * OFFICE COMMUNICATION
- * "EXIT" KEYPAD
- * IFR BEAM POWER
- * REVERSING/SAFETY LOOPS
- * OPTIONAL SPARES

DO NOT SCALE					NOTICE THE INFORMATION CONTAINED ON THIS DOCUMENT IS CONFIDENTIAL. ANY DISSEMINATION, UNAPPROVED DISCLOSURE OR COPYING OF THIS INFORMATION IS STRICTLY PROHIBITED. UNLESS OTHERWISE SPECIFIED DIMENSIONS ARE IN INCHES ANGLES ± 1° .XX ± 1/32, .XX ± .01, .XXX ± .005	Date: 12/07/05	AutoGate Gate Entry Systems Berlin Heights, Ohio FAX (419) 588-3514
Rev.:	Description:	Date:	Drm. By:	Ckd. By:		Drm. By: MKS	
B	Updated drawing	01/23/13	Slid		Ckd. By: DMR	Dwg.: 102C-L	
A	Conduit locations were moved outside the pad	07/18/08	MKS			Title: Conduit Pad Location (Lefthand)	

DIM	DESCRIPTION	MEASUREMENT
"A"	Road/driveway width or clear opening across the road/driveway (Choose a site "STYLE")	
"B"	Face to face of fence posts or pillars (Checkmark a box next to a applicable site "STYLE")	
"C"	Existing gate height, matching fence height or new VPL gate height. (Contact AutoGate)	



PLAN VIEW



ELEVATION VIEW

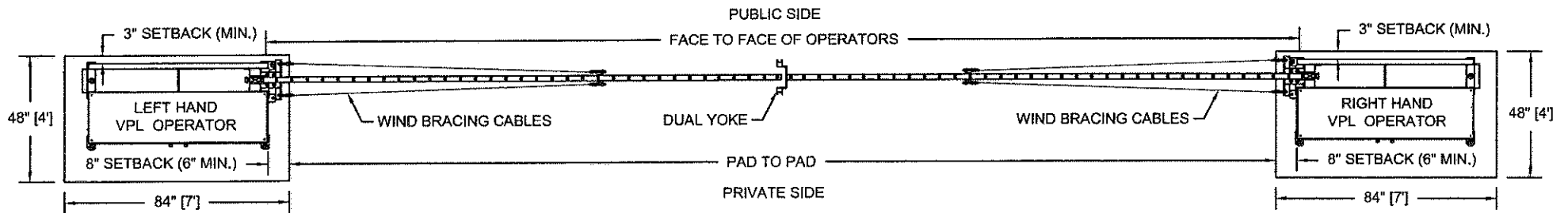
* Viewed from the PRIVATE SIDE

✓ Checkmark your site STYLE

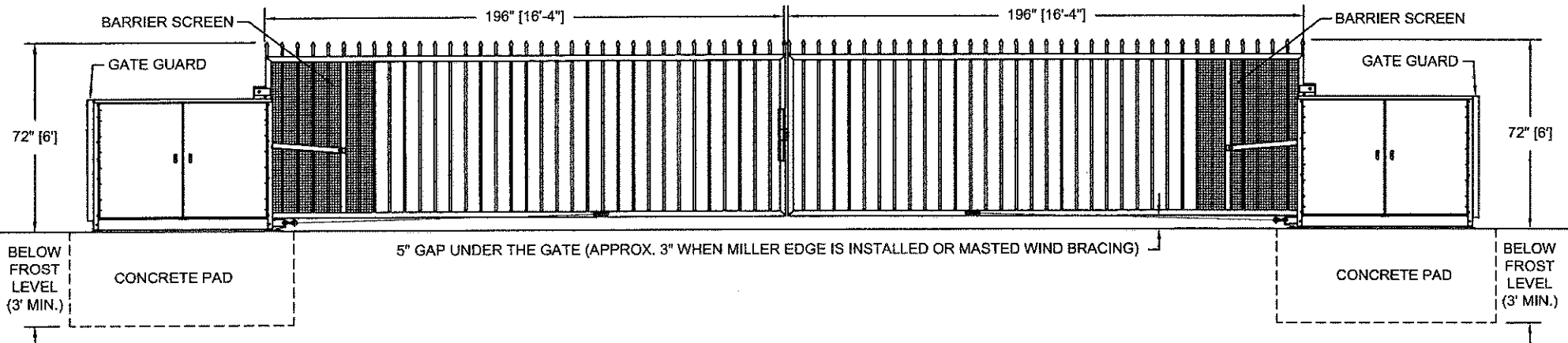
* **Note:** The customer is responsible for indicating (to AutoGate) any variance in the road or drive grading. If the road has curbs, or any slope in the grade, print out and fill in dimensions on: Dwg. # 120, 121 or 122.

Date:	06/02/06	AG AutoGate Gate Entry Systems
Drn. By:	MKS	
Ckd. By:	DMR	Berlin Heights, Ohio FAX (419) 588-3514
Dwg.:	124	
Title:	Lefthand VPL Profile (No Curbs or Slopes)	

COMPLETE AND FAX BACK TO AUTOGATE: (419) 588-3514



PLAN VIEW



ELEVATION VIEW

* VIEWED FROM THE PRIVATE SIDE, LOOKING OUT *

Rev.:	Description:	Date:	Drn. By:	Ckd. By:
A	General revisions, updating drawing	1/22/2013	SLD	KLL

NOTICE
 THE INFORMATION CONTAINED ON THIS DOCUMENT IS CONFIDENTIAL. ANY DISSEMINATION, UNAPPROVED DISCLOSURE OR COPYING OF THIS INFORMATION IS STRICTLY PROHIBITED.
 UNLESS OTHERWISE SPECIFIED DIMENSIONS ARE IN INCHES ANGLES ± 1°
 XX ± 1/32, .XX ± .01, .XXX ± .005

Date: 07/01/09
 Drn. By: MKS
 Ckd. By: .
 Dwg.: 154
 Title: Primary/Secondary Dual Gate - Site Layout

