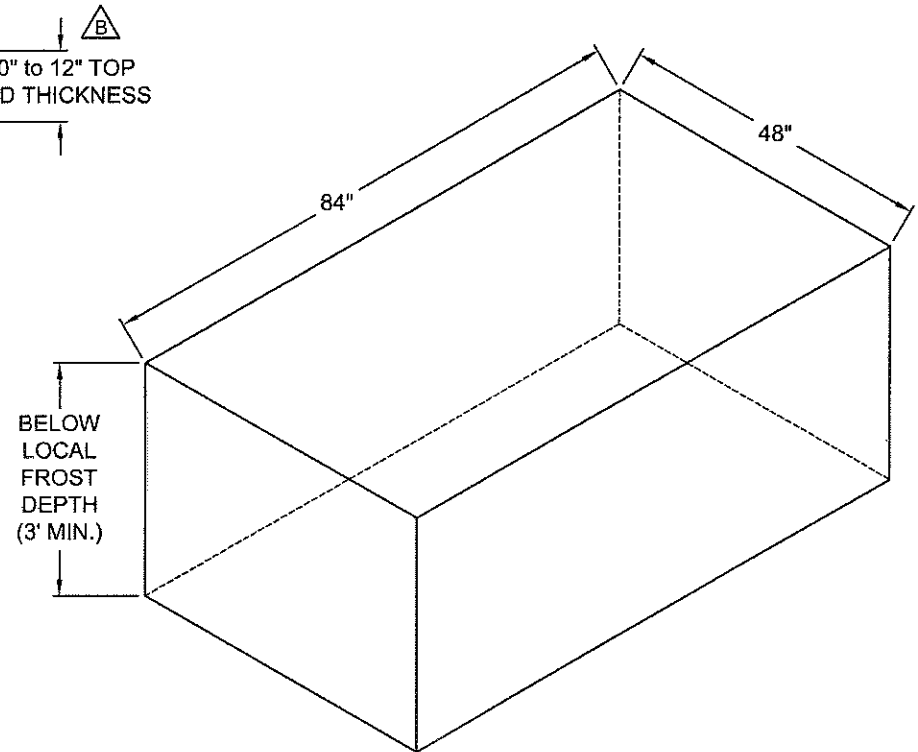
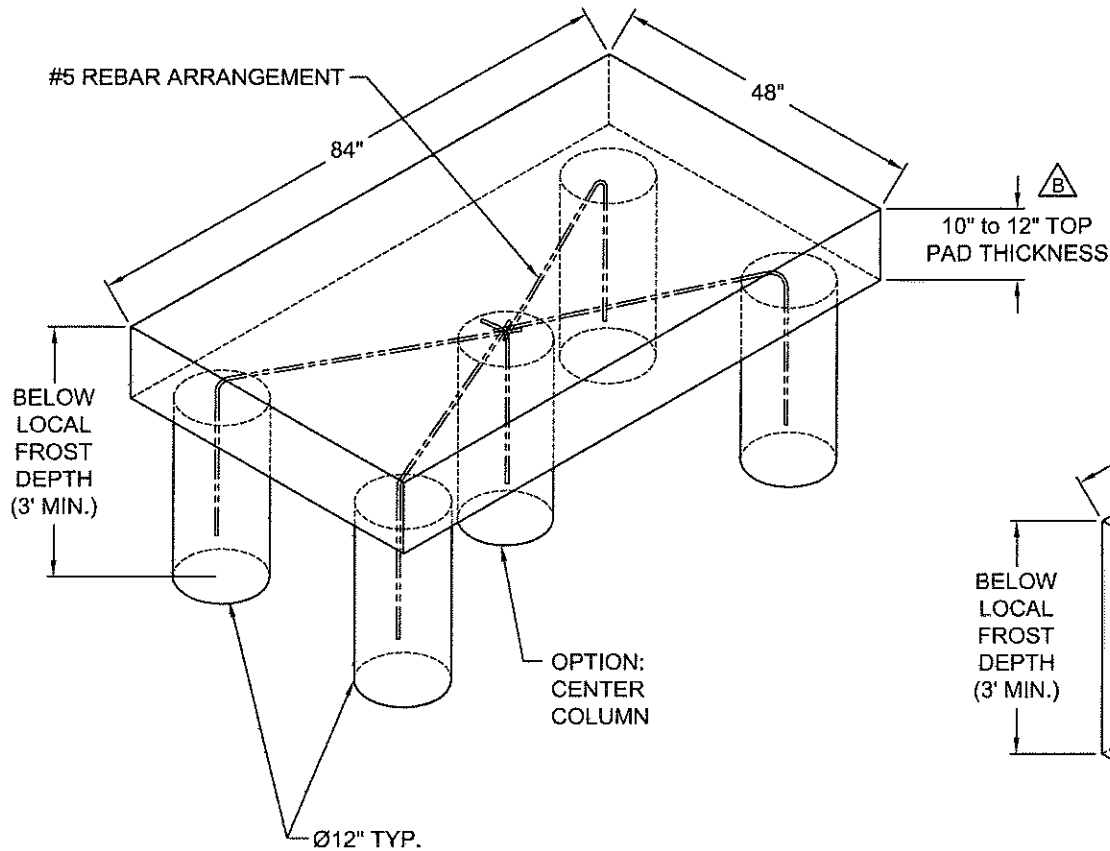


OPTION #1:

(4) or (5) MIN. 12" AUGURED HOLES, RE-BAR, AND A 10" TO 12" TOP PAD



NOTES:

- 1) ALL PAD DEPTHS SHOULD BE BELOW LOCAL FROST DEPTH
- 2) TOP OF PAD MUST BE FLAT AND LEVEL
- 3) USE REBAR THAT CONFORMS WITH LOCAL CODES OR JOB SPECS.

OPTION #2:

FULL CONCRETE PAD WITH RE-BAR WHERE APPLICABLE PER GOVERNING CODE OR STANDARD.

Rev.:	Description:	Date:	Drn. By:	Ckd. By:
B	10" TO 12" PAD THICKNESS WAS 8" TO 10"	01/24/13	SLD	KLL
A	CONDUIT LOCATIONS WERE MOVED OUTSIDE THE PAD	07/18/08	MKS	DMR

NOTICE	
THE INFORMATION CONTAINED ON THIS DOCUMENT IS CONFIDENTIAL. ANY DISSEMINATION, UNAPPROVED DISCLOSURE OR COPYING OF THIS INFORMATION IS STRICTLY PROHIBITED.	
UNLESS OTHERWISE SPECIFIED DIMENSIONS ARE IN INCHES ANGLES ± 1°	
XXX ± 1/32, .XX ± .01, .XXX ± .005	

Date:	12/21/05
Drn. By:	MKS
Ckd. By:	DMR
Dwg.:	102-P
Title:	Operator PAD Layout / Options

