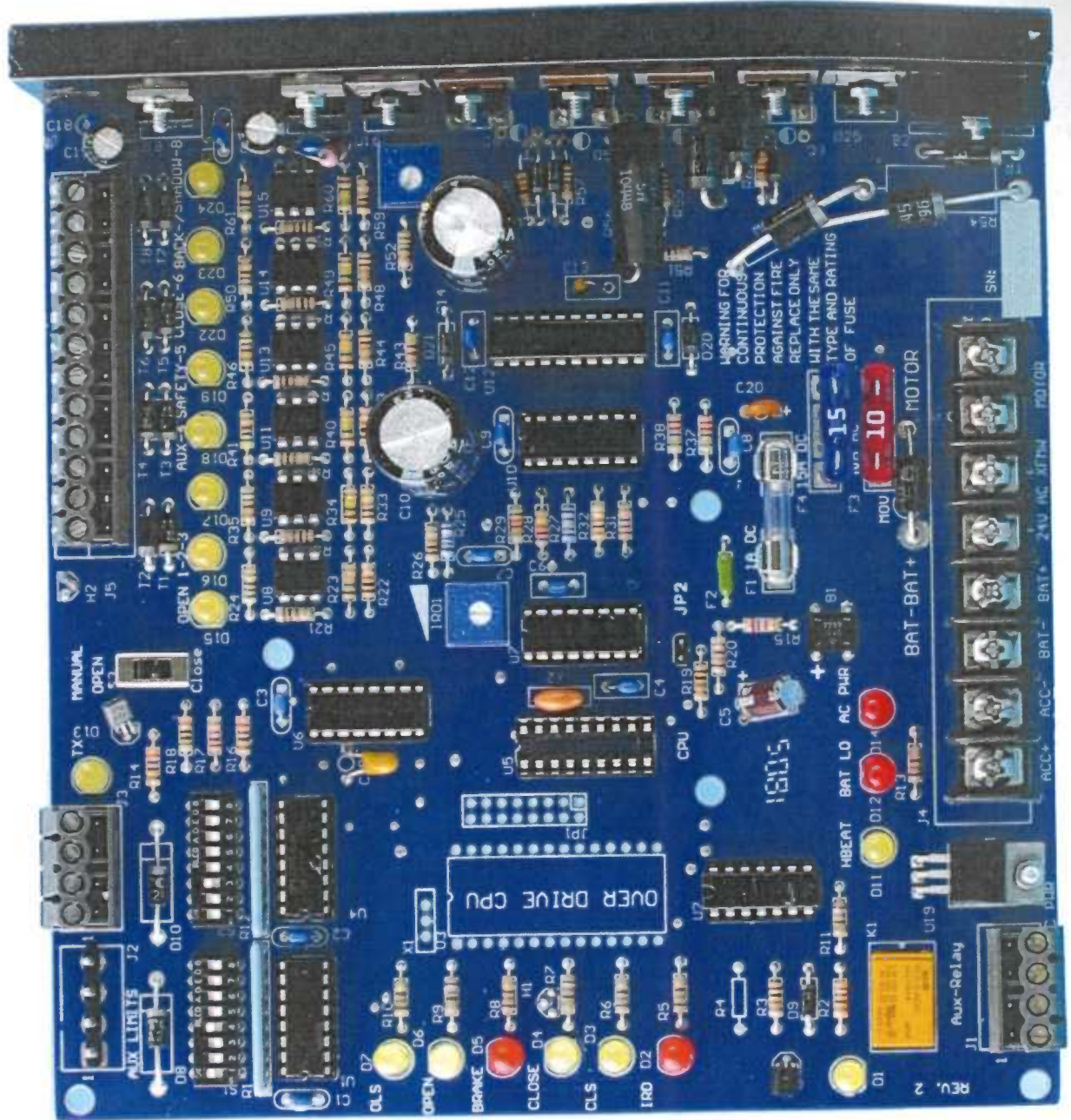


DC Solutions Board



DC Solutions Board

***E2** – The operator senses 2 obstructions before triggering a limit, it shuts down and alarms. Inputs with “Y” for “E2” will reset this condition. All open commands override any other command (timer, close, safety, etc...)

Current Models (MA, MAT, MAS, MAST, MSW, MSL, MSLX) Old models (Mega Arm, Mega Sprint, Mega Swing, Mega Slide, Mega Slide-X)

J5 Plug		Input Name	LED	Function	TTC On	E2	Recommended External Devices
1,2,3	Open	D15,D16,D17		Open only from any position in travel	Y	N	Open Button, TES, Exit Loop
4	Aux. Open	D18		Will open gate from any position in travel, will close gate if appropriate dip switch is on	Y	N	Radio Receiver
5	Safety Close	D19		Reverses a closing gate to the open position	Y	N	Photo Eyes, Safety Loop
6	Close	D22		Closes gate once command is released	Y	N	Close Button, Close Loop
7	Back Away	D23		Opens gate from any position, closes immediately if safety/open is not held. This command is triggered with MANUAL OPEN/CLOSE switch	N	N	Exit Loop
8	Shadow	D24		Will prevent the gate from Opening or closing if on a limit, has no effect in-between limits	Y	N	Shadow Loop, Interlock Wire from Other Operator
9,10,11,12	Common	N/A		Common terminals for all inputs	N/A	N/A	Common wire for each input
JP4	Stop	N/A		Pauses gate and sounds audible alarm while triggered, once released will continue travel	Y	N	Back travel Photo Eyes, Stop Button
Main Board and Auxiliary Connections							
Aux Limits	Limit switches for slide & swing						
J3 IRD	Connects to J3 IRD on 2 nd operator (terminals 1, 2, 4)						
ACC+,-	Accessory device power						
Bat -	Positive and Negative terminal for Batteries. Polarity MATTERS						
Bat +	Yellow wires from Transformer should connect here.						
24v AC	motor wires (Blue and Orange wires)						
XFMR	motor wires (Blue and Orange wires)						
Motor	Commands the board to stop the motor						
Motor	Sends obstruction sense command to 2 nd operator						
	24VDC output voltage for powering external accessory devices max 500mA						
	+ & - terminals without batteries connected should read 27.5, batteries should read 25.5. Use unlabeled pot on right side of board to adjust charging voltage						
	Polarity does not matter for AC input. Should be above 22vac						
	Reverse wires to change direction (follow complete “reverse direction” procedure in manual)						
Dip Switch Settings – When switched on							
LEDs		Description		Mega Arm Dip Switches		Mega SW/SL Dip Switches	
AC PWR	D14	AC power is being supplied to the board		SW1	SW2	SW1	SW2
LOW BATT	D12	Battery Voltage is below 24vdc		1	TTC 1 Sec	1	Fast Run 1 Sec
HBEAT	D11	(Flashing) Main Processor is functioning		2	TTC 2 Sec	2	Fast Run 2 Sec
K1 Relay	D1	(Optional) K1 Relay energized		3	TTC 4 Sec	3	Fast Run 4 Sec
IRD	D2	(Flashing) MRT expired, (ON) force reversal		4	TTC 8 Sec	4	Fast Run 8 Sec
CLS	D3	Close Limit Switch Activated		5	TTC 16 Sec	5	Fast Run 16 Sec
CLOSE	D4	Close relay energized to send voltage to the motor		6	Input Memory	6	Fail Secure-if off=auto open when batt low
BRAKE	D5	Brake has been energized		7	Rev. Direction	7	No Longer Used
OPEN	D6	Open relay energized to send voltage to the motor		8	K1 Function	8	No Longer Used
OLS	D7	Open Limit Switch Activated			Enable TTC		Enable TTC
TX	13	Normally on, flashes when comm w/ 2 nd operator			Auto Open		Auto Open