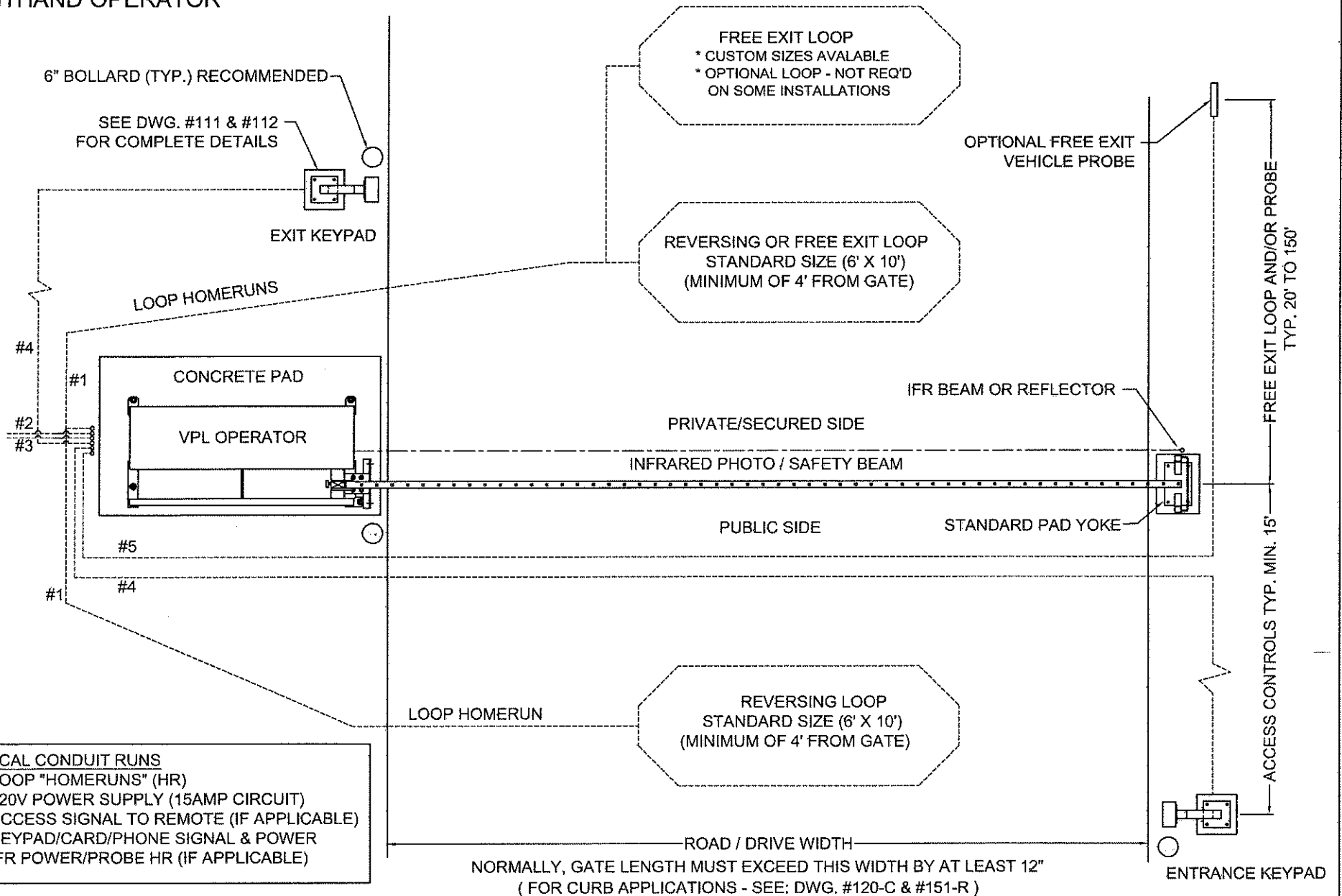


RIGHTHAND OPERATOR



- TYPICAL CONDUIT RUNS**
- #1. LOOP "HOMERUNS" (HR)
 - #2. 120V POWER SUPPLY (15AMP CIRCUIT)
 - #3. ACCESS SIGNAL TO REMOTE (IF APPLICABLE)
 - #4. KEYPAD/CARD/PHONE SIGNAL & POWER
 - #5. IFR POWER/PROBE HR (IF APPLICABLE)

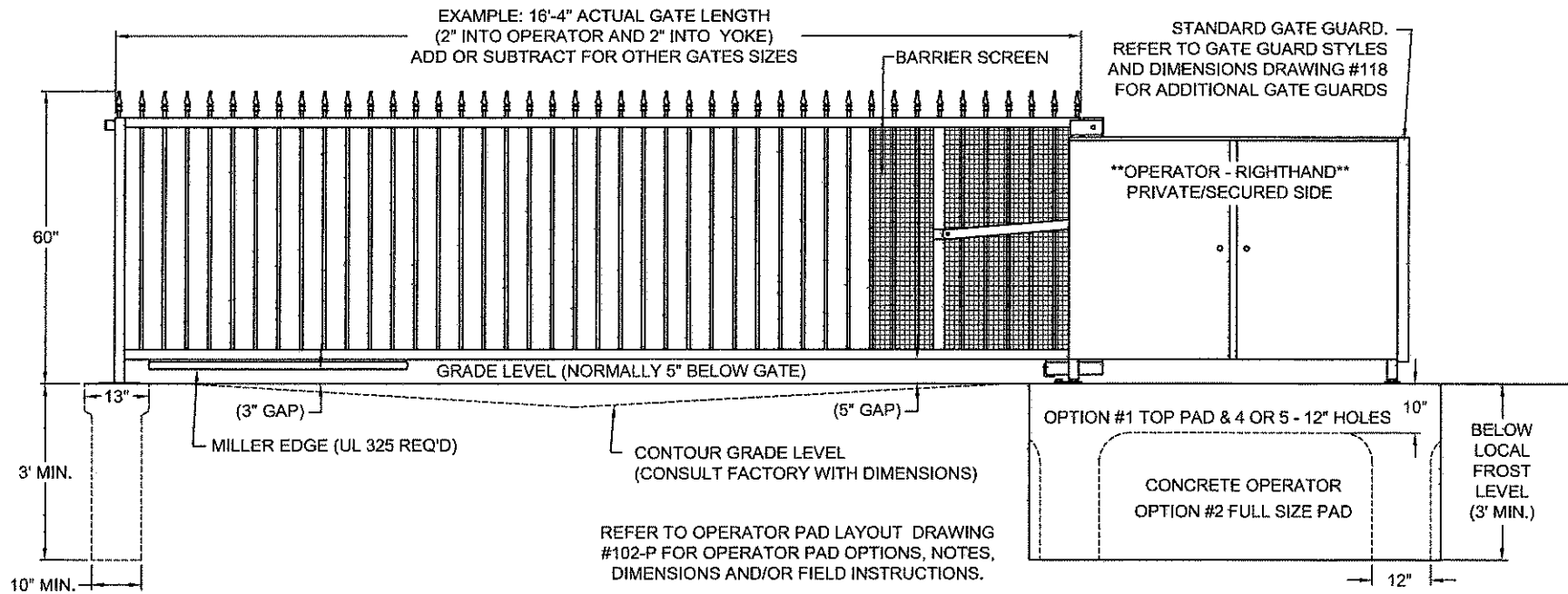
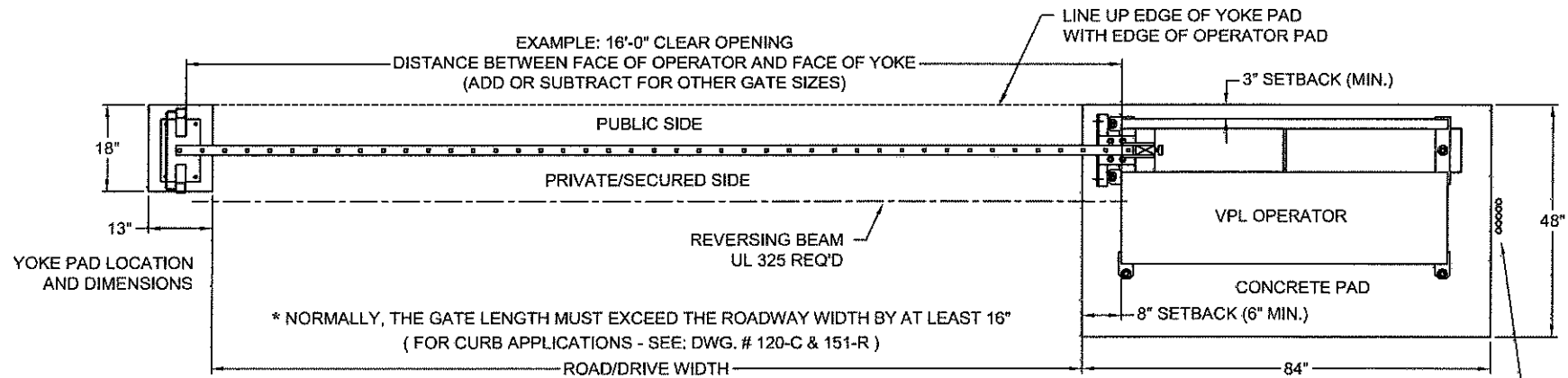
NORMALLY, GATE LENGTH MUST EXCEED THIS WIDTH BY AT LEAST 12"
(FOR CURB APPLICATIONS - SEE: DWG. #120-C & #151-R)

DO NOT SCALE					NOTICE		Date:
Rev.:	Description:	Date:	Drn. By:	Ckd. By:	THE INFORMATION CONTAINED ON THIS DOCUMENT IS CONFIDENTIAL. ANY DISSEMINATION, UNAPPROVED DISCLOSURE OR COPYING OF THIS INFORMATION IS STRICTLY PROHIBITED.		12/20/05
					UNLESS OTHERWISE SPECIFIED DIMENSIONS ARE IN INCHES ANGLES ± 1°		Drn. By: MKS
A	UPDATED DRAWING	01/22/13	SLD	KLL	XX ± 1/32, .XX ± .01, .XXX ± .005		Ckd. By: DMR
							Dwg.: 100-R
							Title: Operator & Accessory Site Layout (R/H)




RIGHTHAND OPERATOR

EXAMPLE SHOWN: 16' X 5' BUCKEYE STYLE 500 GATE
(GATE SIZE AND STYLE MAY VARY)



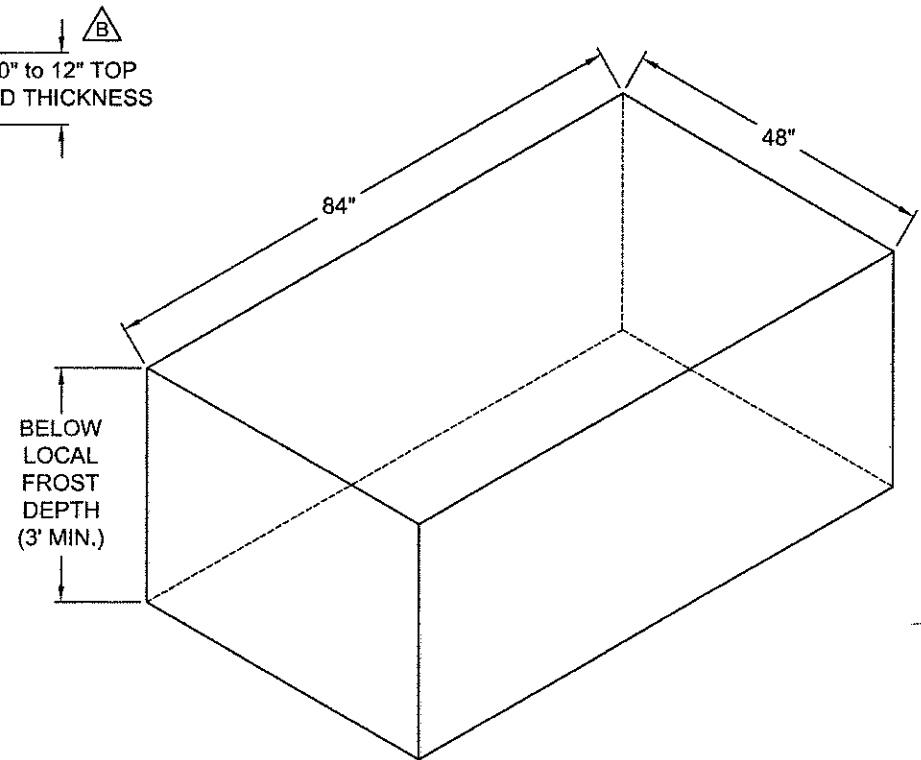
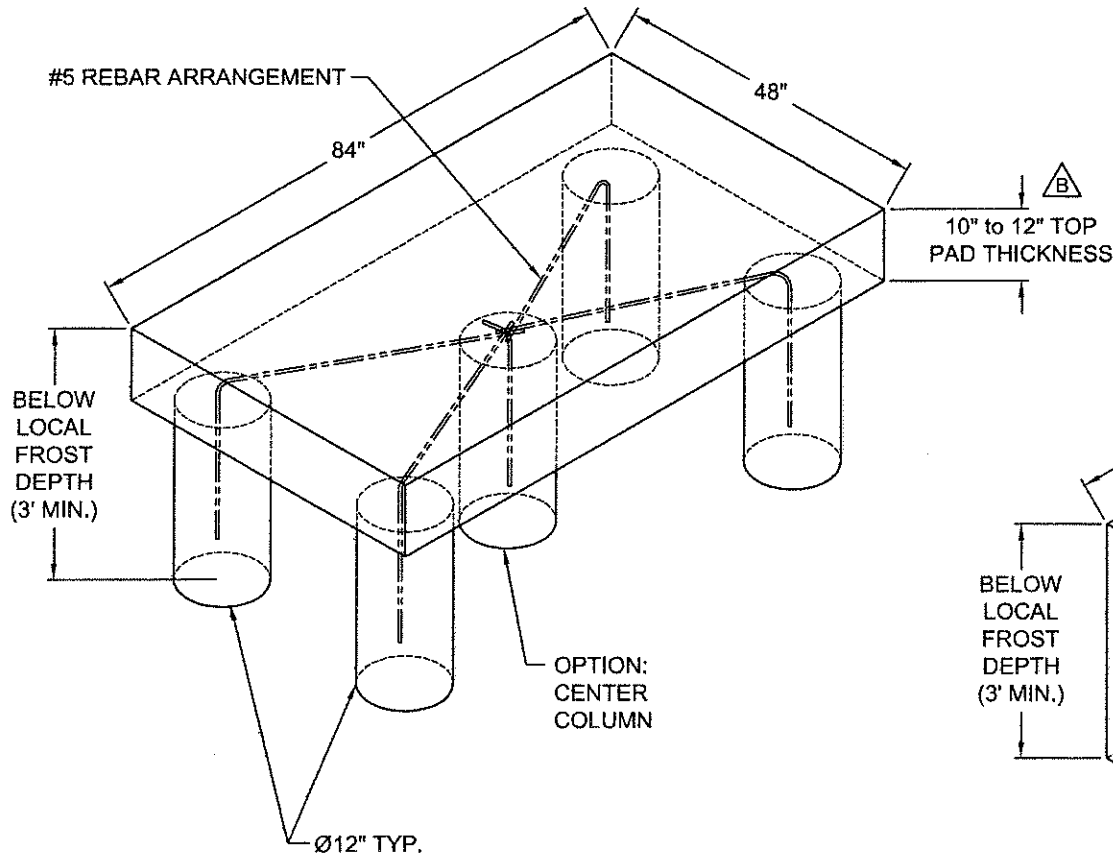
PAD FOR YOKE STYLES "E" & "F" ONLY.
REFER TO YOKE STYLES DRAWING #105
FOR ADDITIONAL MOUNTING METHODS,
DIMENSIONS AND/OR INSTRUCTIONS.

DO NOT SCALE				
Rev.:	Description:	Date:	Drn. By:	Ckd. By:
A	UPDATED DRAWING	01/22/13	SLD	KLL

<p>NOTICE</p> <p>THE INFORMATION CONTAINED ON THIS DOCUMENT IS CONFIDENTIAL. ANY DISSEMINATION, UNAPPROVED DISCLOSURE OR COPYING OF THIS INFORMATION IS STRICTLY PROHIBITED.</p> <p>UNLESS OTHERWISE SPECIFIED DIMENSIONS ARE IN INCHES ANGLES ± 1°</p> <p>XXX ± 1/32, XX ± .01, XXXX ± .005</p>	Date:	12/21/05		
	Drn. By:	MKS		
	Ckd. By:	DMR	Dwg.:	101-R
	Title:		Standard Layout Dimensions - Righthand	

OPTION #1:

(4) or (5) MIN. 12" AUGURED HOLES, RE-BAR, AND A 10" TO 12" TOP PAD THICKNESS



OPTION #2:

FULL CONCRETE PAD WITH RE-BAR WHERE APPLICABLE PER GOVERNING CODE OR STANDARD.

NOTES:

- 1) ALL PAD DEPTHS SHOULD BE BELOW LOCAL FROST DEPTH
- 2) TOP OF PAD MUST BE FLAT AND LEVEL
- 3) USE REBAR THAT CONFORMS WITH LOCAL CODES OR JOB SPECS.

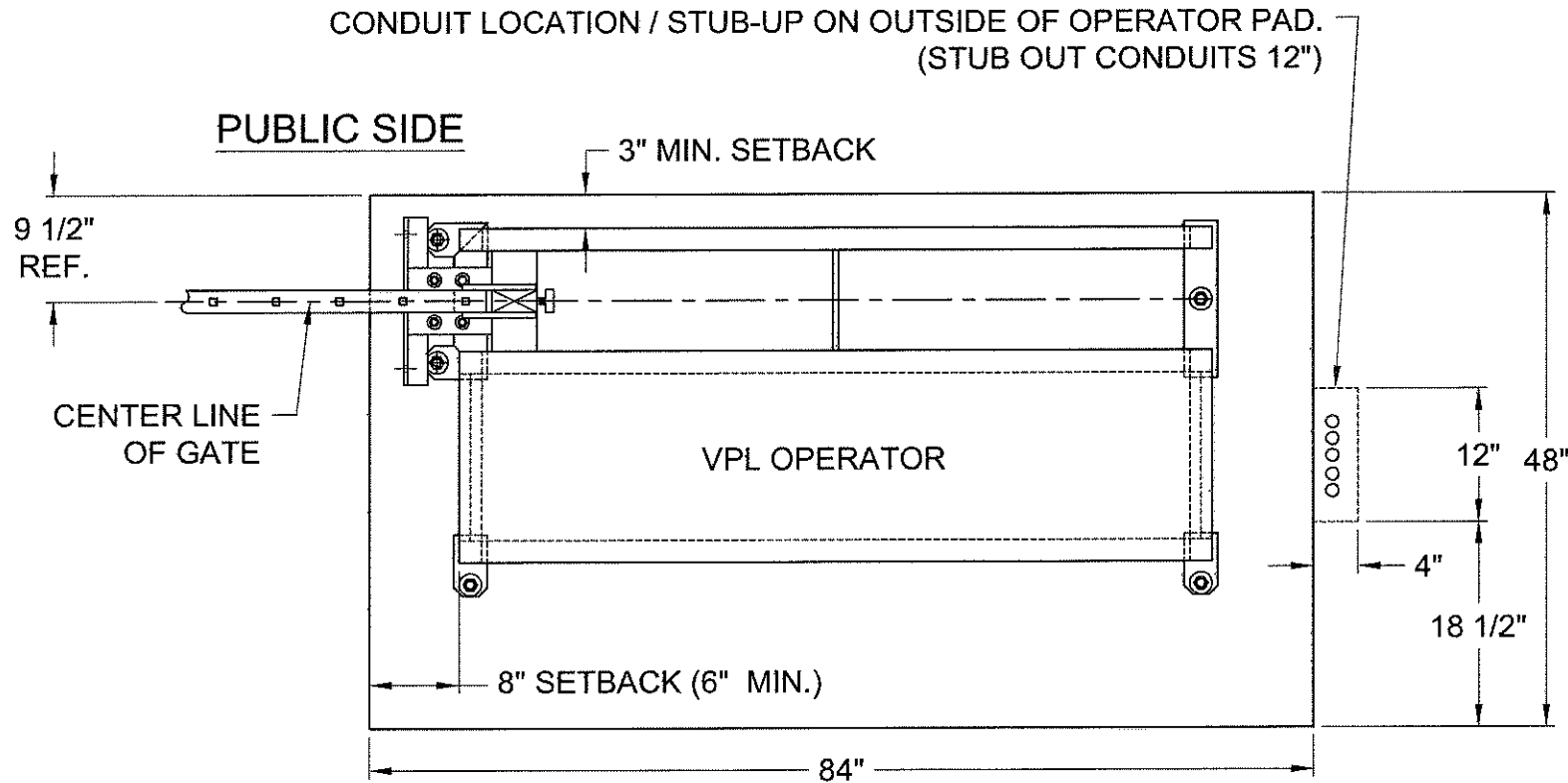
DO NOT SCALE					
Rev.:	Description:	Date:	Drn. By:	Ckd. By:	
B	10" TO 12" PAD THICKNESS WAS 8" TO 10"	01/24/13	SLD	KLL	
A	CONDUIT LOCATIONS WERE MOVED OUTSIDE THE PAD	07/18/08	MKS	DMR	

NOTICE
 THE INFORMATION CONTAINED ON THIS DOCUMENT IS CONFIDENTIAL. ANY DISSEMINATION, UNAPPROVED DISCLOSURE OR COPYING OF THIS INFORMATION IS STRICTLY PROHIBITED.
 UNLESS OTHERWISE SPECIFIED DIMENSIONS ARE IN INCHES
 ANGLES ± 1°
 XX ± 1/32, .XX ± .01, .XXX ± .005

Date: 12/21/05
 Drn. By: MKS
 Ckd. By: DMR
 Dwg.: 102-P
 Title: Operator PAD Layout / Options

AG AutoGate
 Gate Entry Systems
 Berlin Heights, Ohio
 FAX (419) 588-3514

RIGHTHAND OPERATOR



PRIVATE/SECURED SIDE

* NOTE: USE 3/4" CONDUIT ONLY

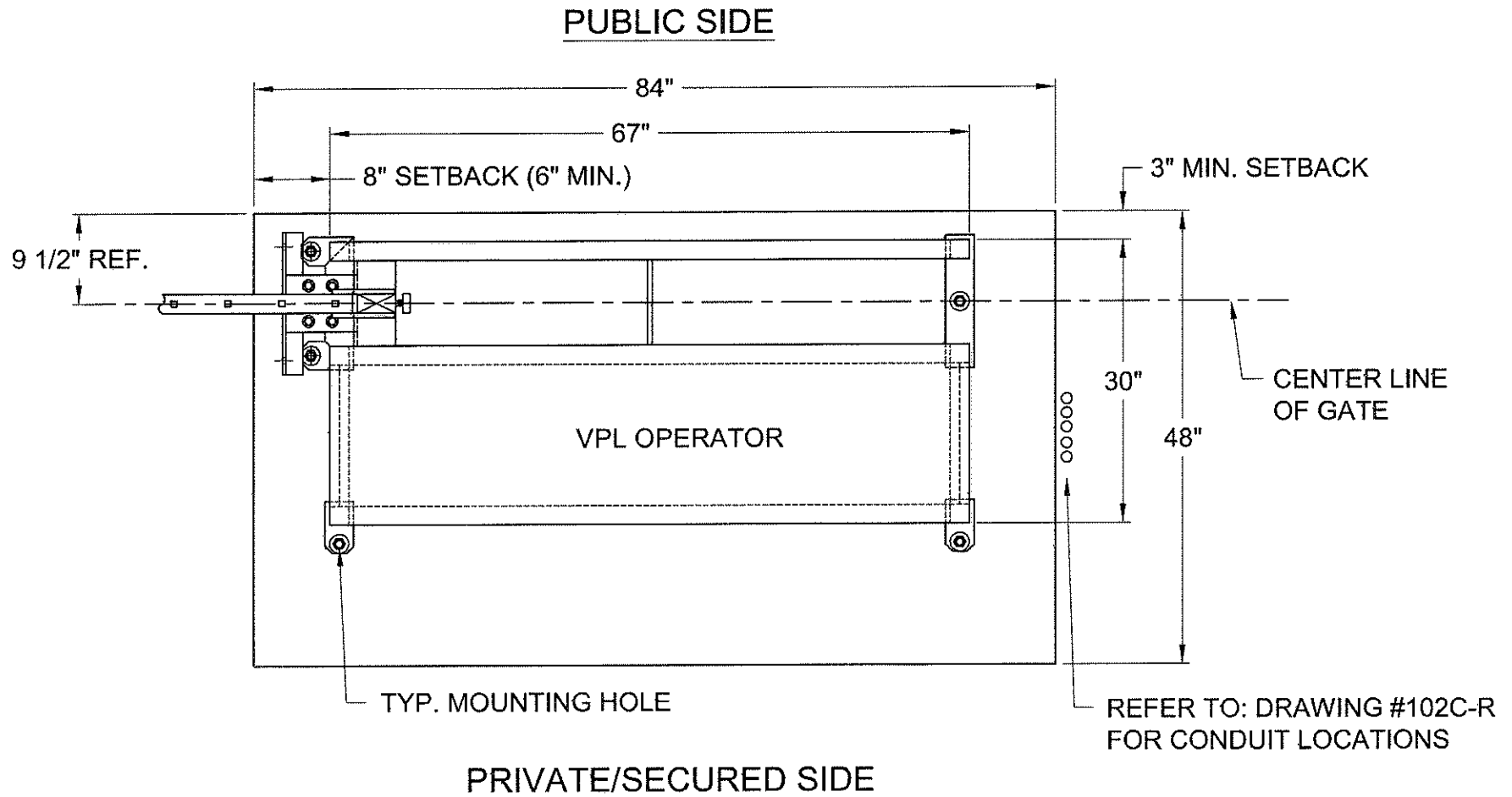
POSSIBLE CONDUITS

- * 120 VAC, MIN. 15 AMP CIRCUIT
- * "ENTRANCE" KEYPAD
- * "EXIT" KEYPAD
- * REVERSING/SAFETY LOOPS
- * FREE EXIT LOOP
- * OFFICE COMMUNICATION
- * IFR BEAM POWER
- * OPTIONAL SPARES

Rev.:	Description:	Date:	Drn. By:	Ckd. By:	NOTICE THE INFORMATION CONTAINED ON THIS DOCUMENT IS CONFIDENTIAL. ANY DISSEMINATION, UNAPPROVED DISCLOSURE OR COPYING OF THIS INFORMATION IS STRICTLY PROHIBITED. UNLESS OTHERWISE SPECIFIED DIMENSIONS ARE IN INCHES ANGLES ± 1° XX ± 1/32, .XX ± .01, .XXX ± .005	Date:	12/07/05
						Date:	12/07/05
						Drn. By:	MKS
						Ckd. By:	DMR
B	Updated drawing	1/24/13	SLD		Dwg.:	102C-R	
A	Conduit locations were moved outside the pad	07/18/08	MKS		Title:	Conduit Pad Location (Righthand)	



RIGHTHAND OPERATOR



NOTES:

- 1) PAD DIMENSIONS CAN VARY PER SITE
- 2) LEAVE AT LEAST 3" BETWEEN ANCHOR AND EDGE OF PAD
- 3) ALL PADS MUST BE POURED LEVEL AND BELOW LOCAL FROST LINE DEPTH

Rev.:	Description:	Date:	Drn. By:	Ckd. By:
C	Updated drawing	1/24/13	SLD	
B	Removed "Stub conduits under operator when possible" note	02/04/10	MKS	
A	Conduit locations were moved outside the pad	07/18/08	MKS	

DO NOT SCALE

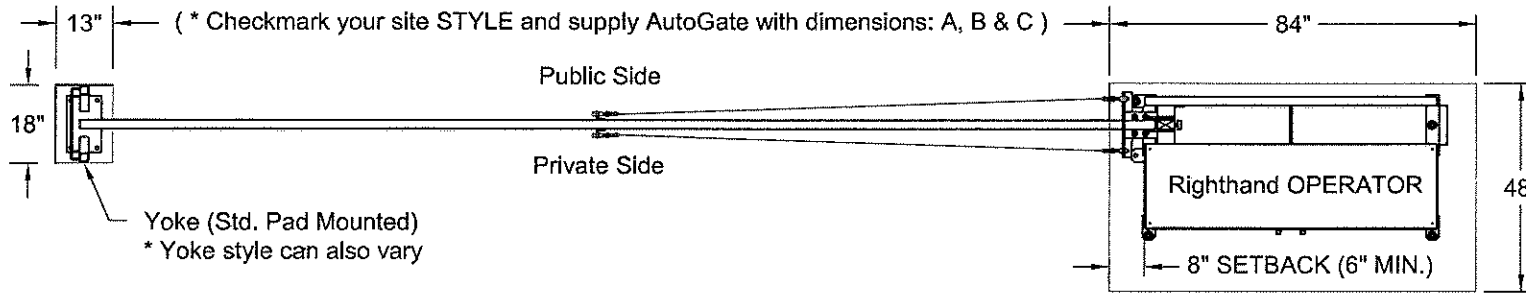
NOTICE
 THE INFORMATION CONTAINED ON THIS DOCUMENT IS CONFIDENTIAL. ANY DISSEMINATION, UNAPPROVED DISCLOSURE OR COPYING OF THIS INFORMATION IS STRICTLY PROHIBITED.
 UNLESS OTHERWISE SPECIFIED DIMENSIONS ARE IN INCHES ANGLES ± 1°
 X/X ± 1/32, XX ± .01, XXX ± .005

Date: 12/07/05
 Drn. By: MKS
 Ckd. By: DMR

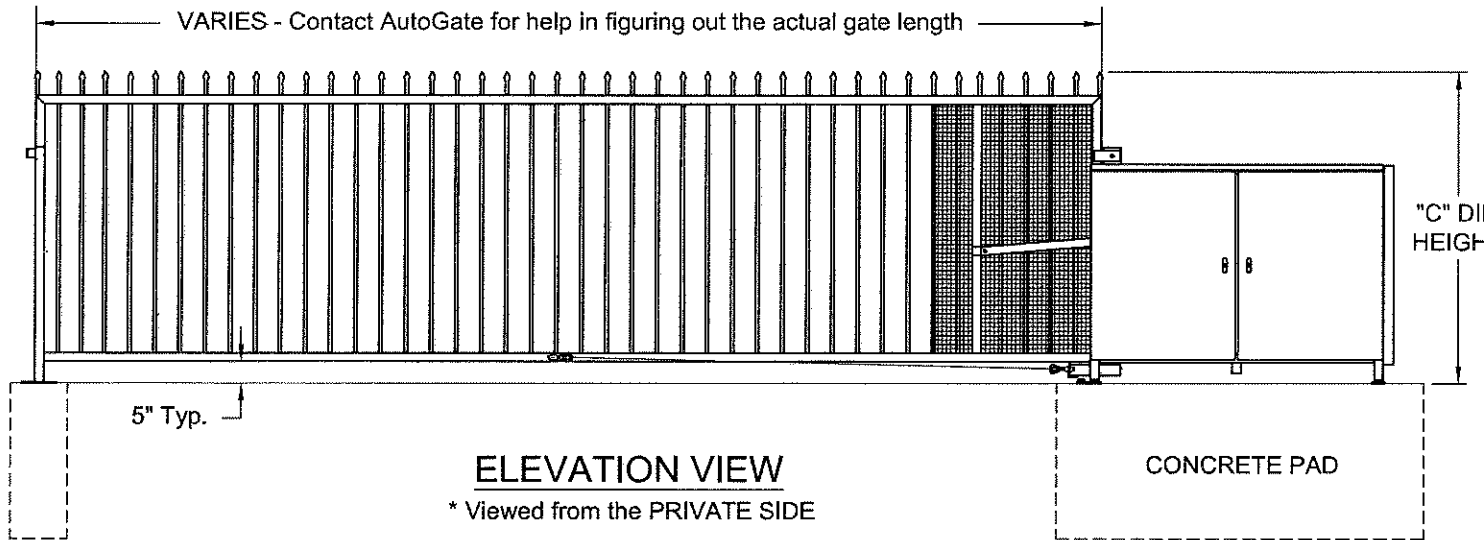


Dwg.: 102-R
 Title: Standard Pad Layout (Righthand)

DIM	DESCRIPTION	MEASUREMENT
"A"	Road/driveway width or clear opening across the road/driveway (Choose a site "STYLE")	
"B"	Face to face of fence posts or pillars (Checkmark a box next to a applicable site "STYLE")	
"C"	Existing gate height, matching fence height or new VPL gate height. (Contact AutoGate)	

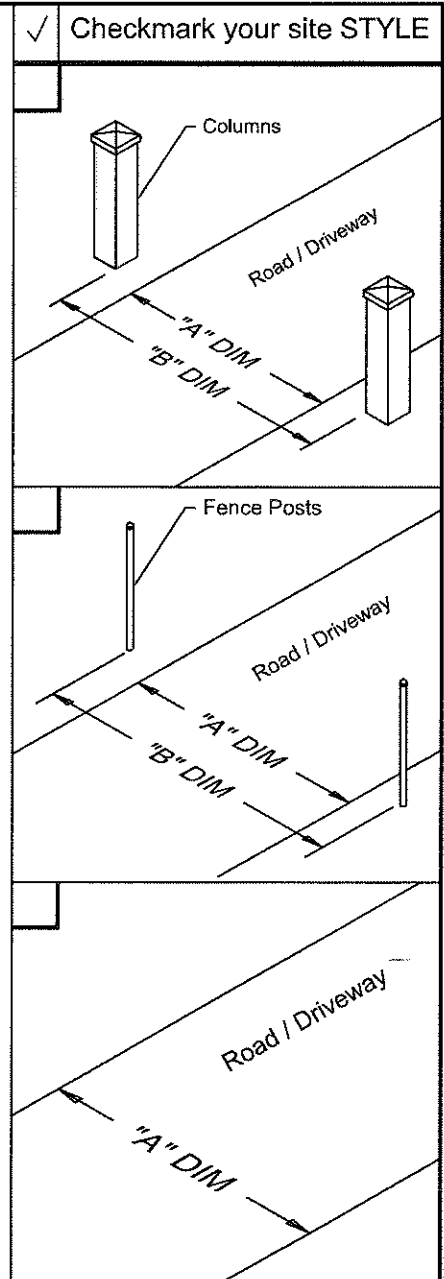


PLAN VIEW



ELEVATION VIEW

* Viewed from the PRIVATE SIDE

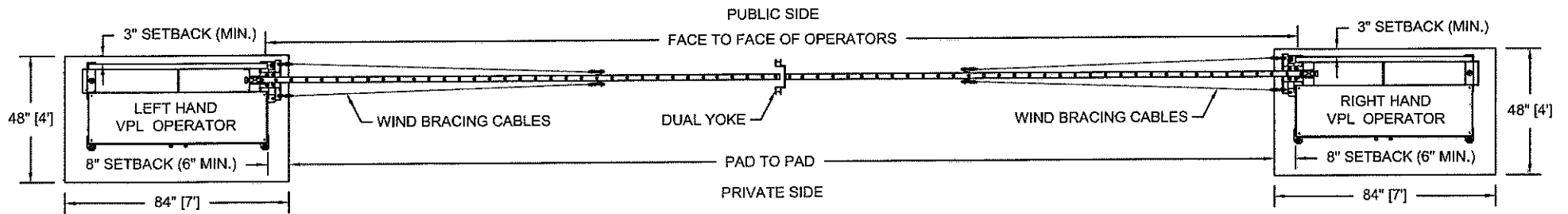


✓ Checkmark your site STYLE

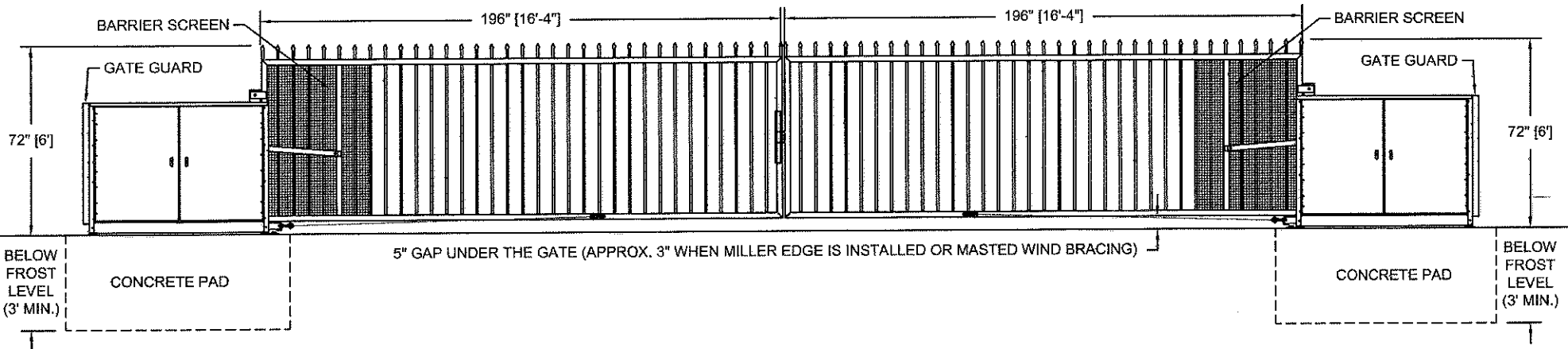
* Note: The customer is responsible for indicating (to AutoGate) any variance in the road or driveway grading. If the road has curbs, or any slope in the grade, print out and fill in dimensions on: Dwg. # 120, 121 or 122.

Date: 06/02/06	AG AutoGate Gate Entry Systems
Drn. By: MKS	
Ckd. By: DMR	Berlin Heights, Ohio FAX (419) 588-3514
Dwg.: 123	
Title: Righthand VPL Profile (No Curbs or Slopes)	

COMPLETE AND FAX BACK TO AUTOGATE: (419) 588-3514



PLAN VIEW



ELEVATION VIEW

* VIEWED FROM THE PRIVATE SIDE, LOOKING OUT *

Rev.:	Description:	Date:	Drn. By:	Ckd. By:
A	General revisions, updating drawing	1/22/2013	SLD	KLL

NOTICE
 THE INFORMATION CONTAINED ON THIS DOCUMENT IS CONFIDENTIAL. ANY DISSEMINATION, UNAPPROVED DISCLOSURE OR COPYING OF THIS INFORMATION IS STRICTLY PROHIBITED.

UNLESS OTHERWISE SPECIFIED DIMENSIONS ARE IN INCHES
 ANGLES ± 1°
 X/X ± 1/32, XX ± .01, XXX ± .005

Date: 07/01/09
 Drn. By: MKS
 Ckd. By: .
 Dwg.: 154
 Title: Primary/Secondary Dual Gate - Site Layout

